

CGY Series Overview

Description

The CGY series rotary joint is used for high pressure, low speed applications, media can be water, oil and etc, double-ball bearing, integrated structure.

- Transmit fluid, gas when 360°unrestricted rotation.
- All stainless steel structure
- Advanced sealing technology
- High reliability and long lifespan



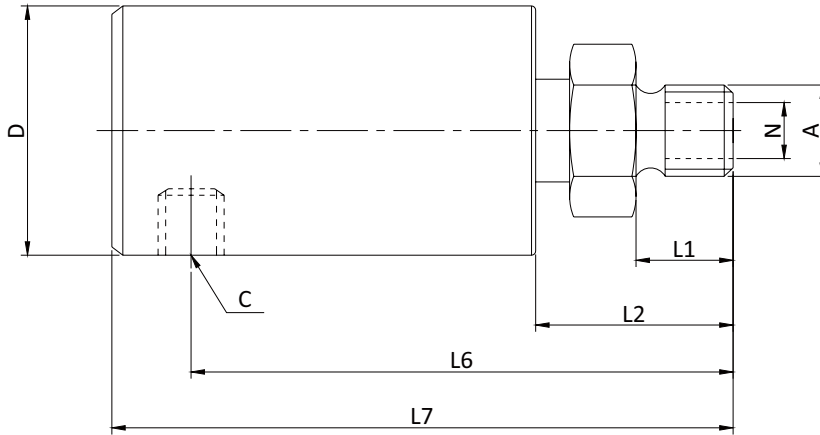
Specifications

Item	
Channel	Single
Pressure	Max.20MPa
Thread Size	Rc1/4 ~ Rc1-1/2
Rotor Thread Direction	RH and LH
Operating Temperature	Max.200° C
Suitable Media	Gas / Fluid
Speed	≤100 RPM
Housing Material	Stainless steel

All values listed under Technical Specifications are dependent on a combination of all application parameters. Please note operational life is dependent upon both rotational speed and duty cycle.

INTRODUCE

CGY series

CGY Series Dimensions

Part#	A	C	ΦN	ΦD	L1	L2	L6	L7
CGY-8	R1/4	Rc1/4	6	45	13	20	68	80
CGY-10	R3/8	Rc3/8	9	45	15	26	78	93
CGY-15	R1/2	Rc1/2	12	48	16	28	78	95
CGY-20	R3/4	Rc3/4	16	60	18	33	92	108
CGY-25	R1	Rc1	23	63	20	35	105	125
CGY-32	R1-1/4	Rc1-1/4	30	78	23	43	125	158
CGY-40	R1-1/2	Rc1-1/2	35	88	25	55	140	172

Notes:

1. Drawings not actual size, dimensions are in millimeters