

## H Series Overview

### Description

The H series rotary joint is intended for cooling water, with zero leakage and long lasting performance. The water rotary union is made using high-quality brass and features a balanced sealing design

- Transmit cooling water, gas when 360°unrestricted rotation.
- Stainless steel shaft
- Advanced sealing technology
- Mounting Flange can be option



### Specifications

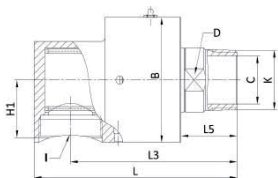
Item	
Channel	Mono or dual
Pressure	Max. 10bar
Thread Size	Rc1/4 ~ Rc2-1/2
Rotor Thread Direction	RH and LH
Operating Temperature	Max. 90° C
Suitable Media	Cooling water / Gas / Oil
Speed	≤1000 RPM
Housing Material	Copper

All values listed under Technical Specifications are dependent on a combination of all application parameters. Please note operational life is dependent upon both rotational speed and duty cycle.

# INTRODUCE

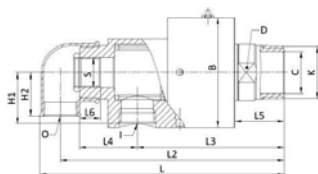
## H series

### HD Series Dimensions



Part#	DN	K	I	L	L3	L5	H1	ΦB	ΦC	D
HD-8	8	R1/4	Rc1/4	76	66	22	20	39	5	11
HD-10	10	R3/8	Rc3/8	105	90	30	28	55	8	21
HD-15	15	R1/2	Rc1/2	105	90	30	28	55	12	21
HD-20	20	R3/4	Rc3/4	115	95	30	31	62	16	24
HD-25	25	R1	Rc1	125	103	33	37	74	20	30
HD-32	32	R1-1/4	Rc1-1/4	156	128	42	45	90	30	38
HD-40	40	R1-1/2	Rc1-1/2	160	130	40	48	95	36	44
HD-50	50	R2	Rc2	220	182	60	61	122	48	55
HD-65	65	R2-1/2	Rc2-1/2	256	211	68	78	156	62	75

### HSG Series Dimensions (Stationary Internal Pipe)



Part#	DN	K	I	O	S	L	L2	L3	L4	L5	L6	H1	H2	ΦB	ΦC	D
HSG-15	15	R1/2	Rc1/2	Rc1/2	G1/8	147	135	90	35	30	15	28	25	55	12	21
HSG-20	10	R3/4	Rc3/4	Rc1/2	G1/4	170	155	95	45	30	15	31	30	62	16	24
HSG-25	15	R1	Rc3/4	Rc1/2	G3/8	175	160	103	38	33	18	37	33	74	20	30
HSG-32	20	R1-1/4	Rc1-1/4	Rc1/2	G1/2	211	196	128	54	42	22	45	38	90	30	38
HSG-40	25	R1-1/2	Rc1-1/2	Rc3/4	G3/4	232	210	130	55	40	25	48	43	95	36	44
HSG-50	32	R2	Rc1-1/2	Rc1	G1	300	278	182	73	60	25	60	51	122	48	55
HSG-65	40	R2-1/2	Rc2	Rc1-1/4	G1-1/4	350	325	211	84	68	30	78	62	156	62	75

#### Notes:

1. Drawings not actual size, dimensions are in millimeters