

## MP2-H Series Overview

### Description

Cosmau MP2-H series multiple passage rotary unions with 2 channel for media transfer, design for oil, water and coolant in rotating system.

- Transmit hydraulic oil, water and coolant when 360°unrestricted rotation
- Combined with electrical slip ring,transfer power,control signal, data
- Through hole or flange structure optional
- Available all kinds of custom solutions



### Specifications

| Item                  |  |
|-----------------------|--|
| Pneumatic Channel     | 2  |
| Pressure              | Max. 350bar  |
| Connection Szie       | 1/8" 1/4", 3/8", 1/2", 3/4", 1"                        |
| Connection Type       | BSPB   |
| Operating Temperature | -18° C to 150° C                                       |
| Suitable Media        | Oil / Water / Coolant                                  |
| Speed                 | Max. 300 RPM   |
| Material              | AL alloy housing, Carbon Steel / Stainless Steel Shaft |

**Note:** All values listed under Technical Specifications are dependent on a combination of all application parameters. Please note service life is dependent upon both rotational speed and duty cycle.

### Options

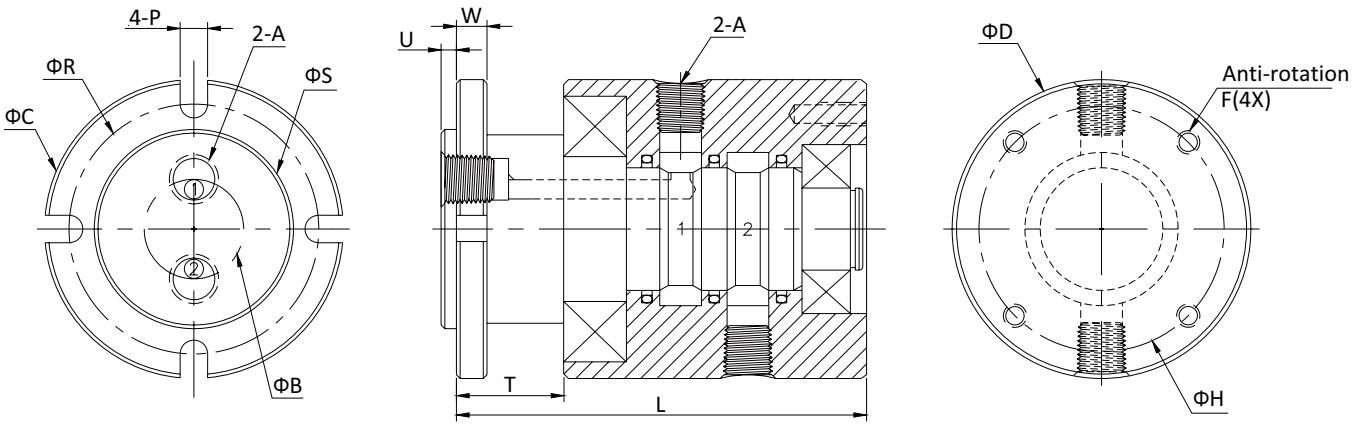
- Mounting Flange / Through Hole
- Connection Size
- Connection Type
- Material
- Pressure
- Media
- Optional Speed
- Combine with electrical slip ring

# INTRODUCE

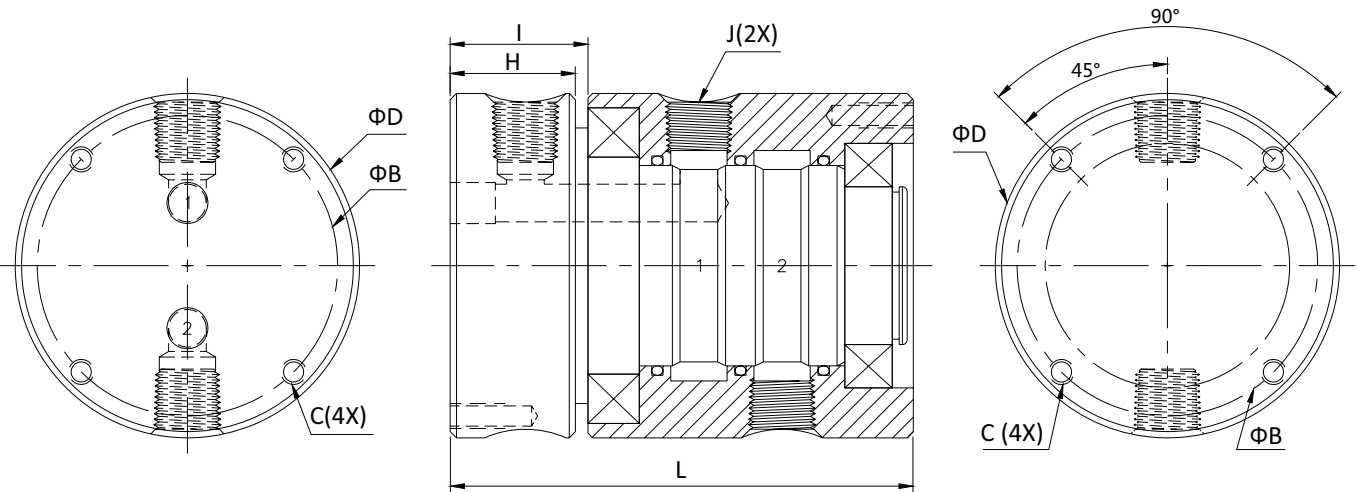
## MP2-H

3

### MP2-H Series Dimensions



| Part#    | A(BSPP/NPT) | ΦB   | ΦC    | ΦD    | ΦR   | ΦS | U | W  | T  | P   | F   | ΦH   | L     |
|----------|-------------|------|-------|-------|------|----|---|----|----|-----|-----|------|-------|
| MP-201-H | 1/8"        | 20.5 | 64.5  | 64.5  | 54   | 42 | 3 | 6  | 24 | 6.5 | M6  | 54   | 114.2 |
| MP-202-H | 1/4"        | 22   | 69.5  | 69.5  | 59   | 47 | 3 | 6  | 24 | 6.5 | M6  | 59   | 117.2 |
| MP-203-H | 3/8"        | 25.5 | 74.5  | 74.5  | 64   | 52 | 3 | 6  | 24 | 6.5 | M6  | 64   | 126.2 |
| MP-204-H | 1/2"        | 31.5 | 89.5  | 89.5  | 76.5 | 63 | 3 | 8  | 32 | 9   | M8  | 76.5 | 149.4 |
| MP-205-H | 3/4"        | 38   | 104.5 | 104.5 | 91.5 | 76 | 3 | 9  | 32 | 9   | M8  | 91.5 | 163.5 |
| MP-206-H | 1"          | 48   | 129.5 | 129.5 | 114  | 96 | 4 | 10 | 37 | 11  | M10 | 114  | 185.2 |



| Part#    | J(BSPP/NPT) | ΦB  | C   | ΦD    | H    | I  | L     |
|----------|-------------|-----|-----|-------|------|----|-------|
| AP-201-H | 1/8"        | 54  | M6  | 64.5  | 19.5 | 20 | 110.2 |
| AP-202-H | 1/4"        | 59  | M6  | 69.5  | 22.5 | 23 | 116.2 |
| AP-203-H | 3/8"        | 64  | M6  | 74.5  | 28.5 | 29 | 132.2 |
| AP-204-H | 1/2"        | 77  | M8  | 89.5  | 33.5 | 34 | 148.7 |
| AP-205-H | 3/4"        | 87  | M8  | 99.5  | 42.5 | 43 | 174.5 |
| AP-206-H | 1"          | 100 | M10 | 114.5 | 56.5 | 57 | 205.8 |